

Planning and Building in Riyadh 1975-2005



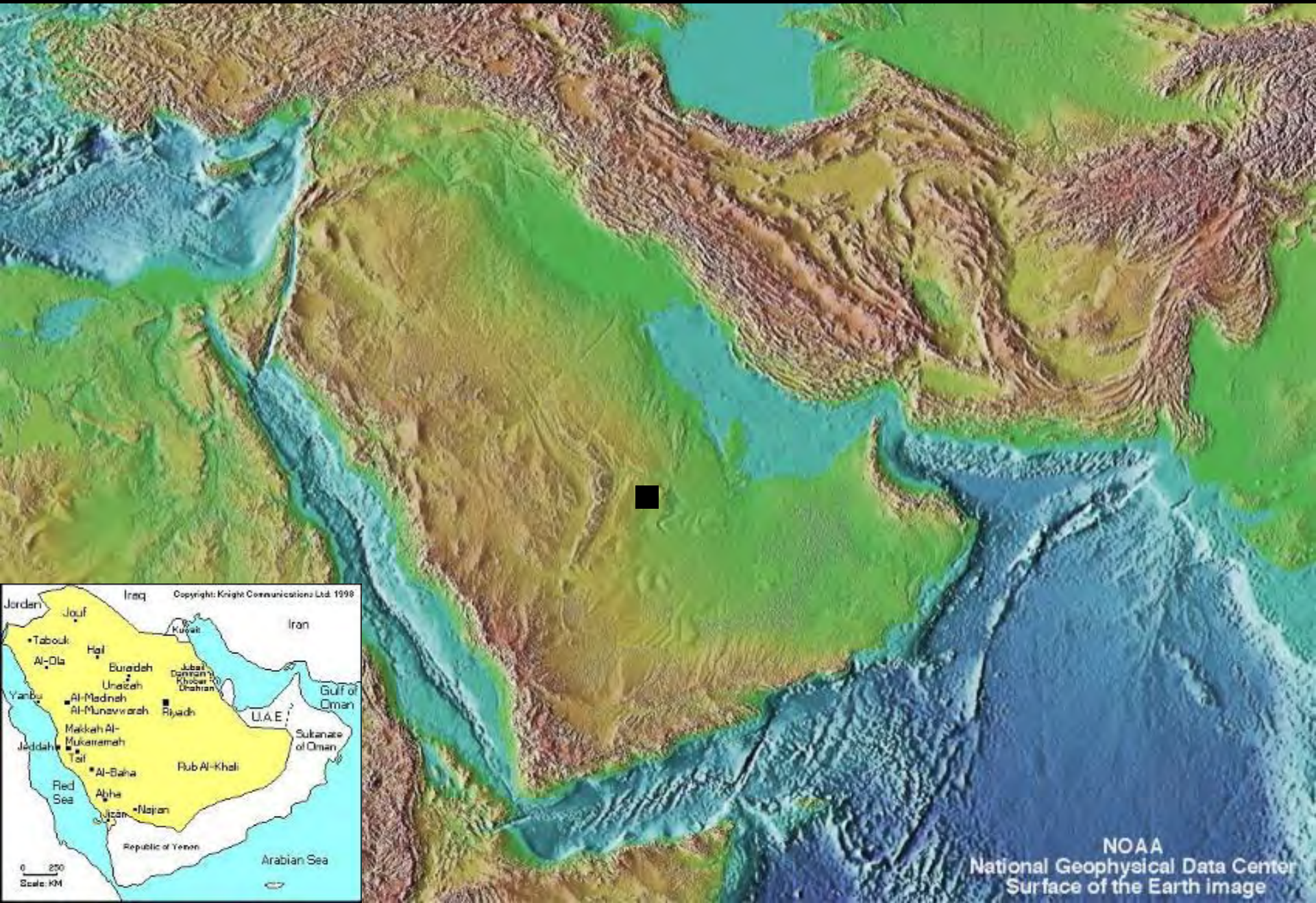
Seminario Urbanismo Internacional

14 al 18 de Marzo 2005

Planning and Building in Riyadh 1975-2005



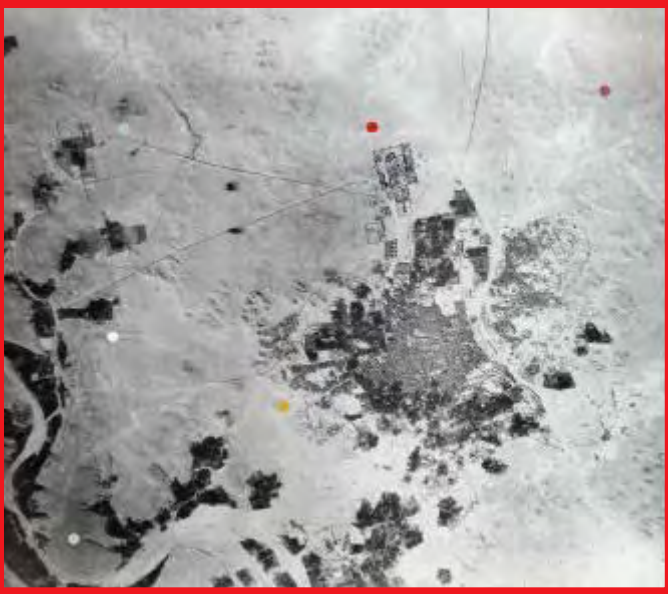
Planning and Building in Riyadh 1975-2005



Planning and Building in Riyadh 1975-2005

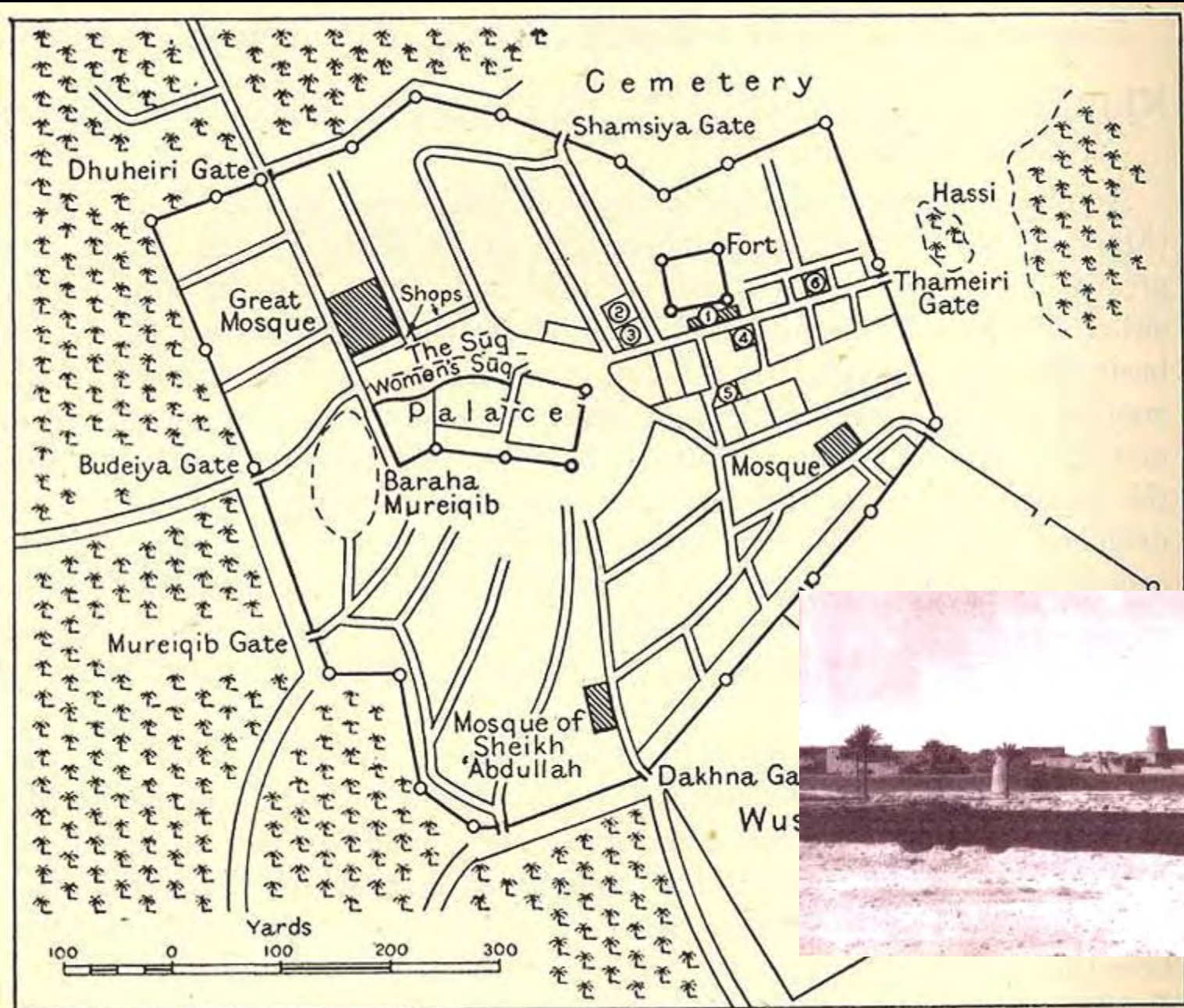


Planning and Building in Riyadh 1975-2005



Riyadh 1950 - 2000

Planning and Building in Riyadh 1975-2005



Riyadh 1947

Planning and Building in Riyadh 1975-2005



Planning and Building in Riyadh 1975-2005



Planning and Building in Riyadh 1975-2005



Minoru Yamasaki 1972

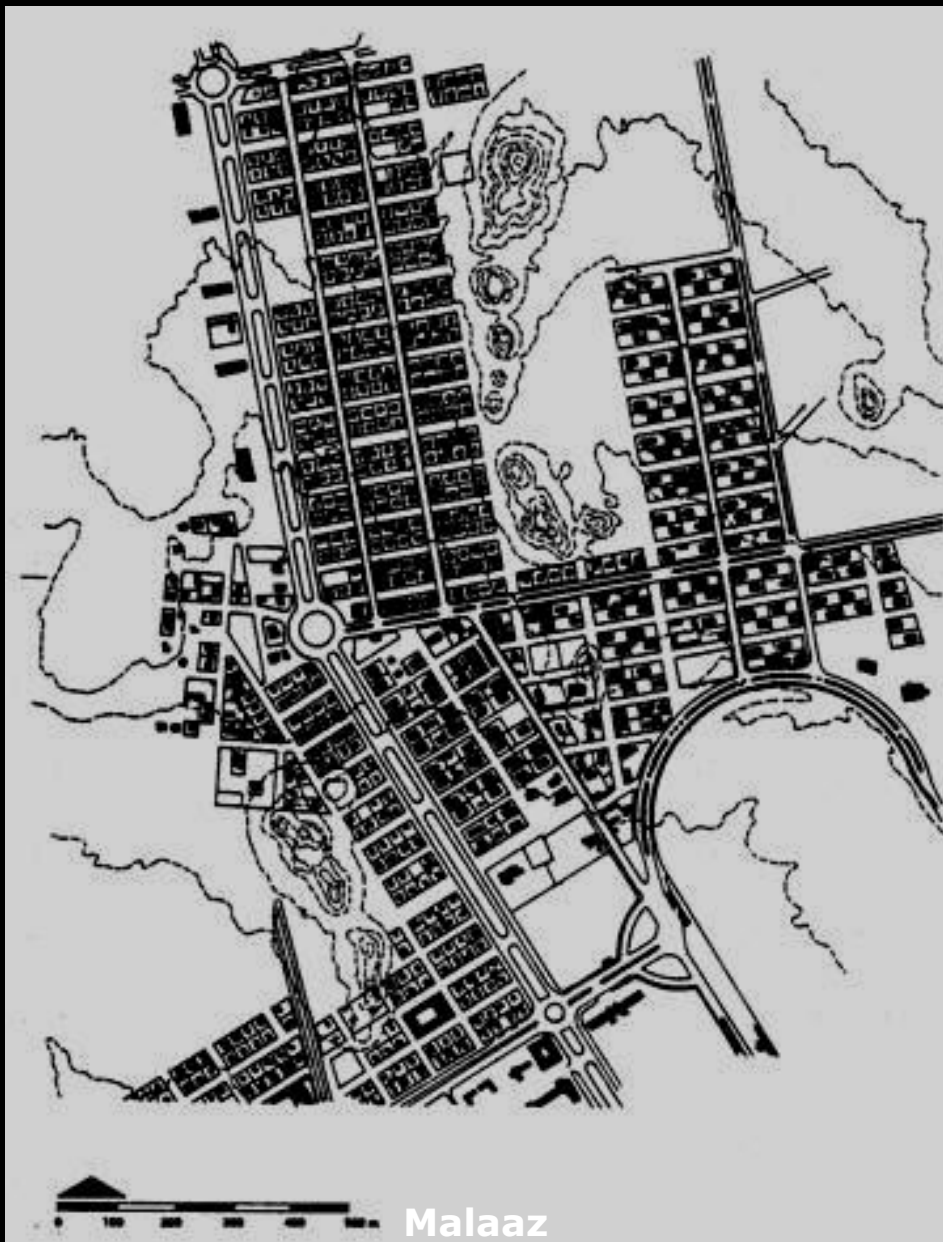


Rush Housing 1975

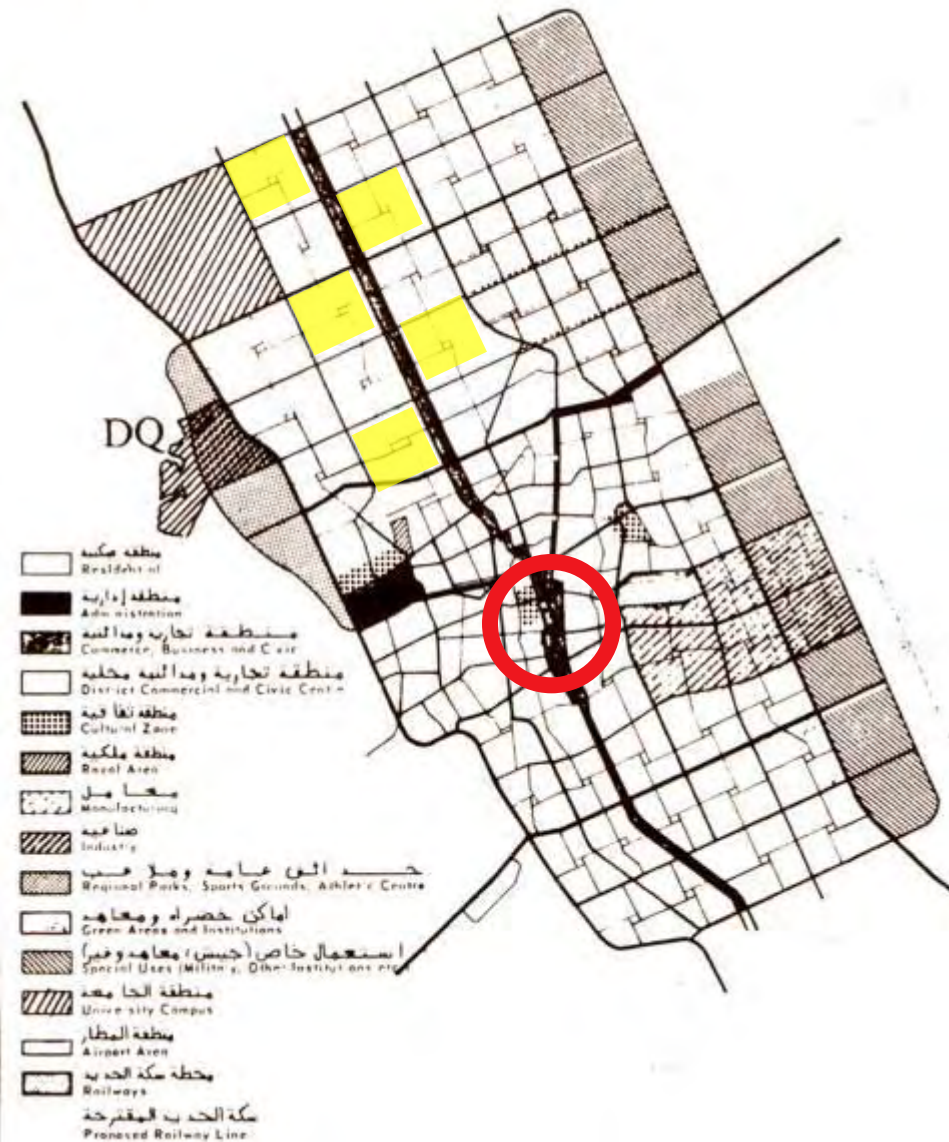
Planning and Building in Riyadh 1975-2005



Planning and Building in Riyadh 1975-2005



RIYADH MASTER PLAN



Planning and Building in Riyadh 1975-2005



Doxiadis Grid

Planning and Building in Riyadh 1975-2005

Supergrid 2 x 2 km



Doxiadis Grid

Planning and Building in Riyadh 1975-2005

Supergrid & urban pattern



Doxiadis Grid



100

100%

Planning and Building in Riyadh 1975-2005



Central Spine

Planning and Building in Riyadh 1975-2005



Planning and Building in Riyadh 1975-2005



Planning and Building in Riyadh 1975-2005



Planning and Building in Riyadh 1975-2005



Planning and Building in Riyadh 1975-2005



Planning and Building in Riyadh 1975-2005



Kenzo Tange 1972

Norman Foster 1999

Planning and Building in Riyadh 1975-2005



Planning and Building in Riyadh 1975-2005



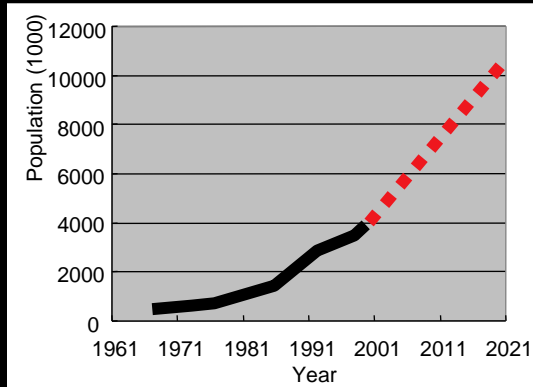
Planning and Building in Riyadh 1975-2005

1950

Dirriyah

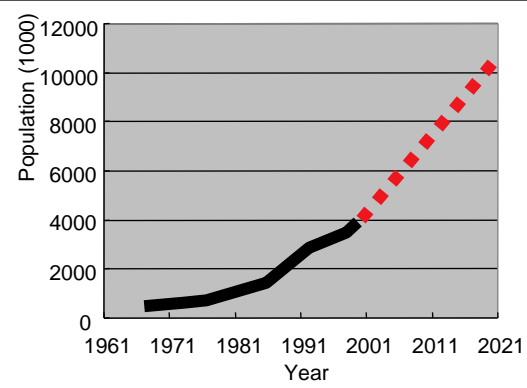
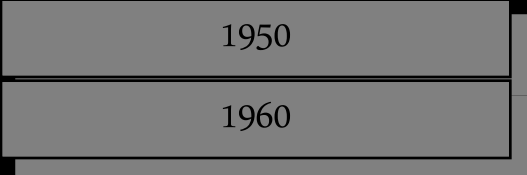
Arqah

Riyadh



Growth of Riyadh 1950-90

Planning and Building in Riyadh 1975-2005



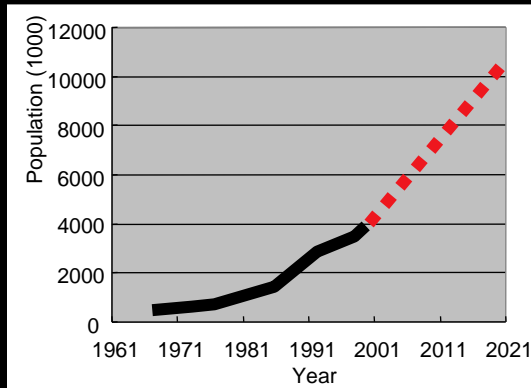
Growth of Riyadh 1950-90

Planning and Building in Riyadh 1975-2005

1950

1960

1970

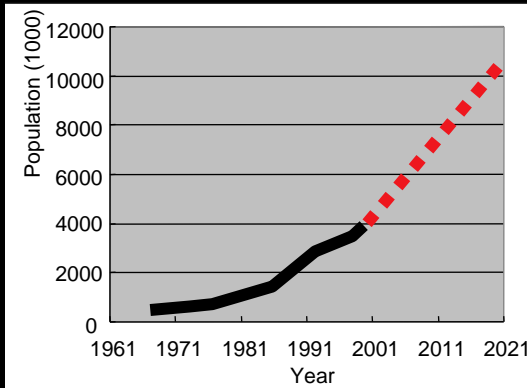


Growth of Riyadh 1950-90



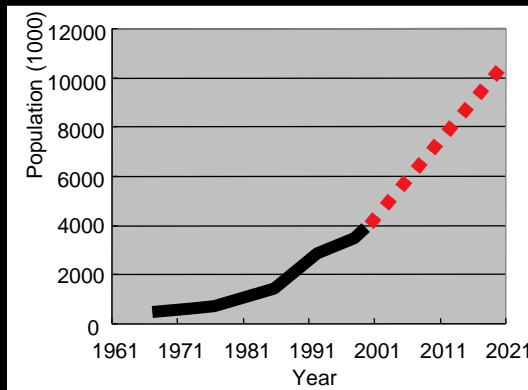
Planning and Building in Riyadh 1975-2005

1950
1960
1970
1980



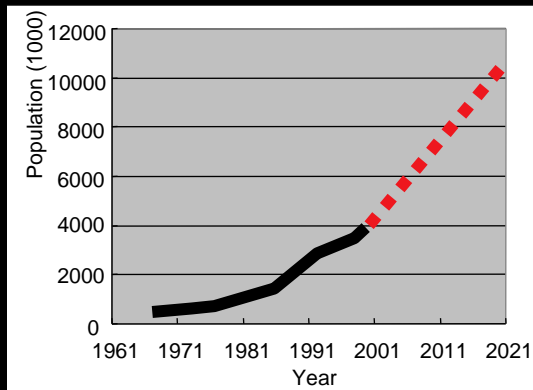
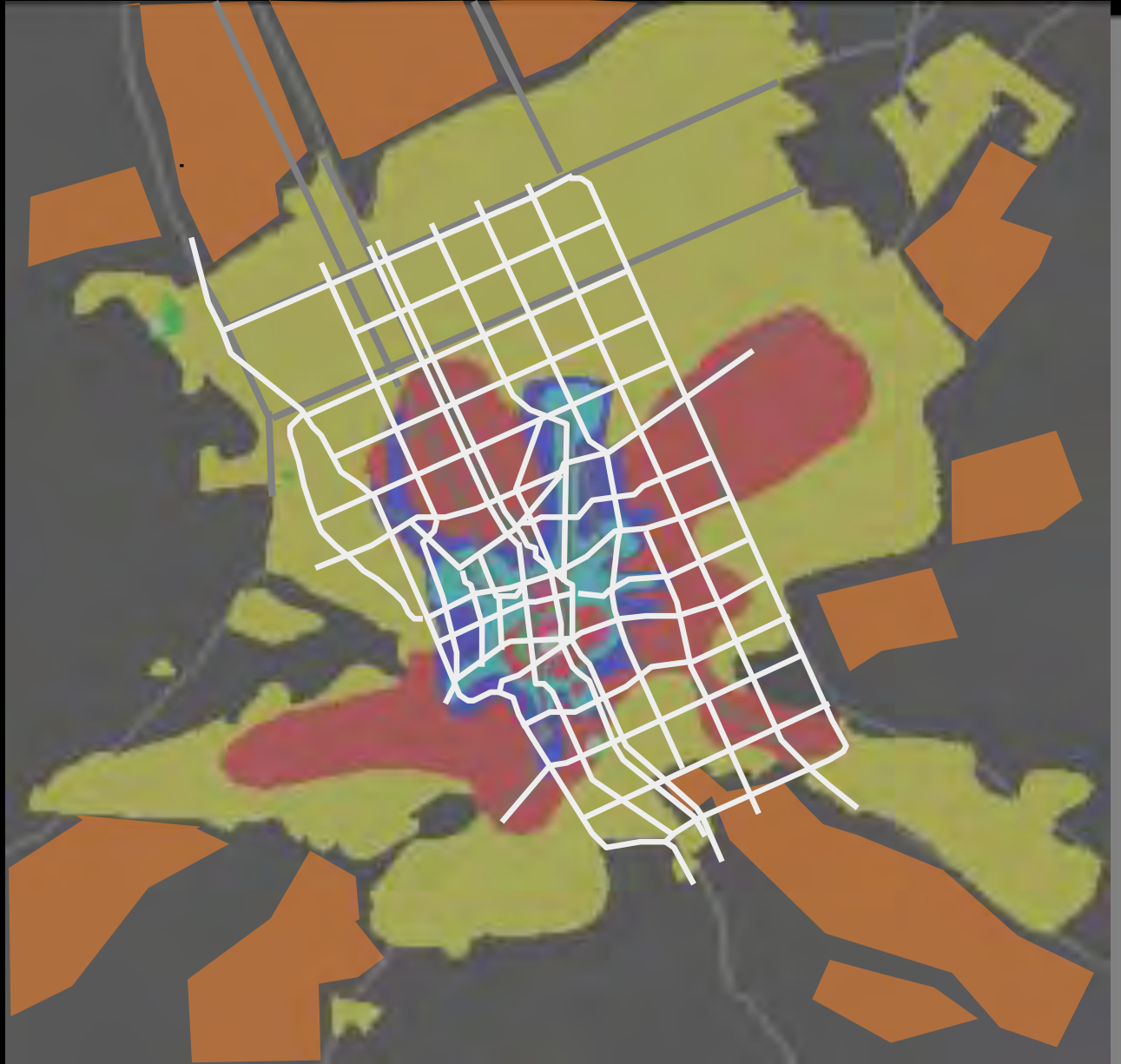
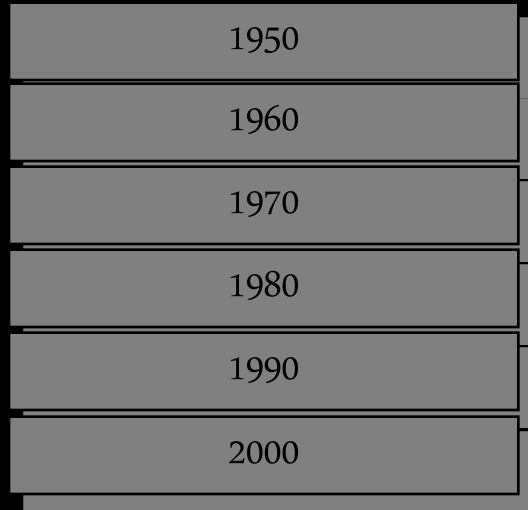
Growth of Riyadh 1950-90

Planning and Building in Riyadh 1975-2005



Growth of Riyadh 1950-90

Planning and Building in Riyadh 1975-2005



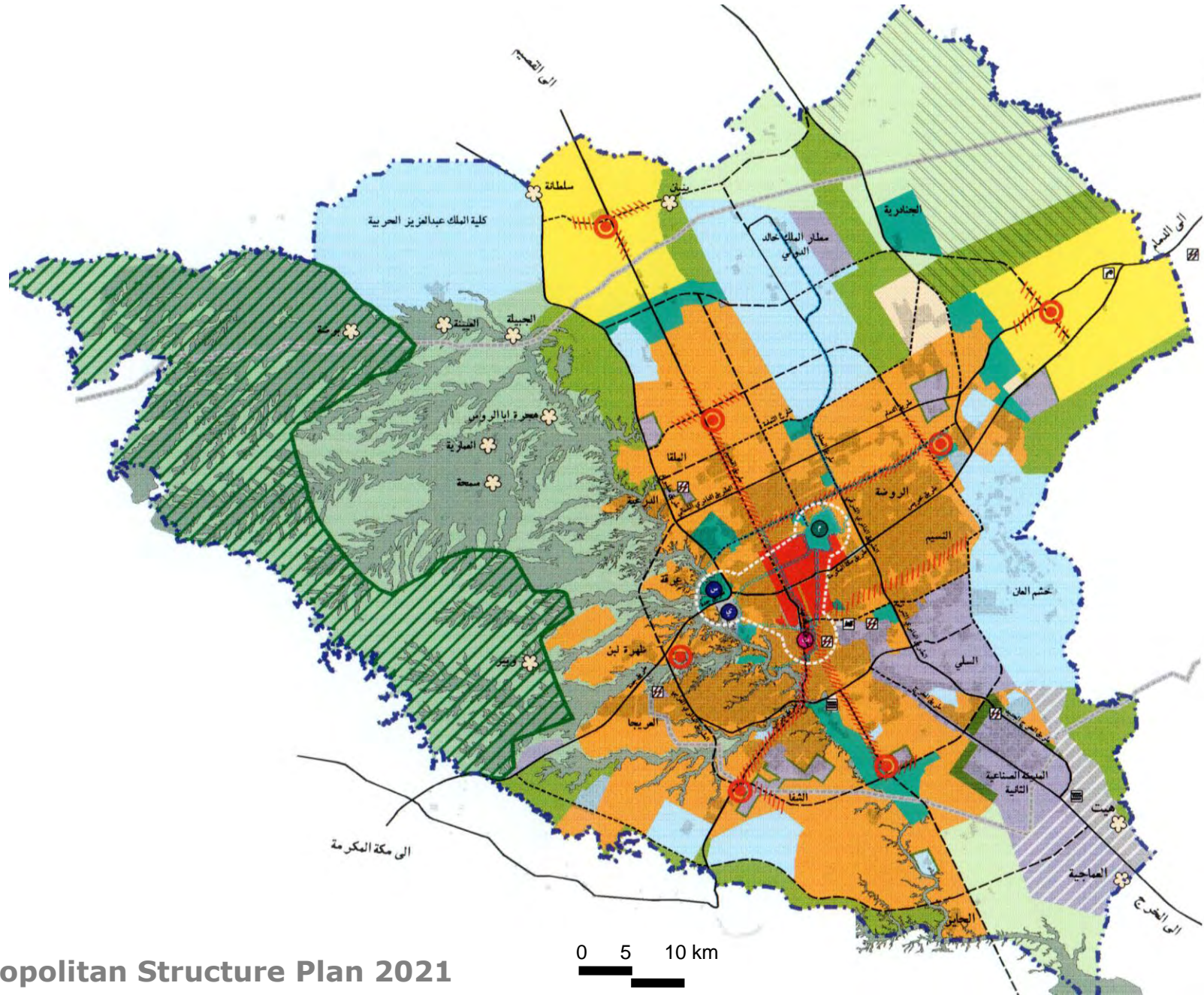
Growth of Riyadh 1950-90

Planning and Building in Riyadh 1975-2005



Riyadh 2003

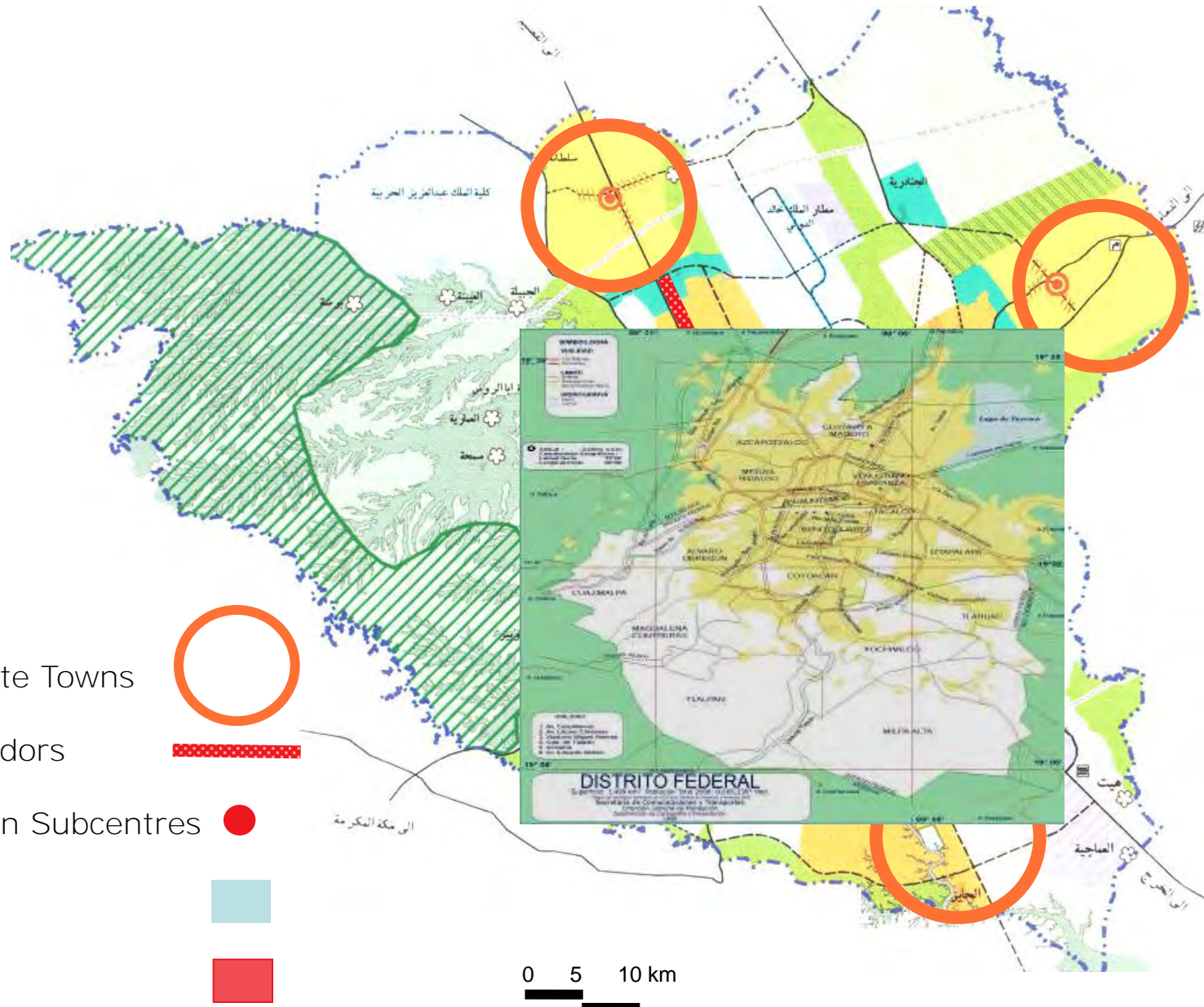
Planning and Building in Riyadh 1975-2005



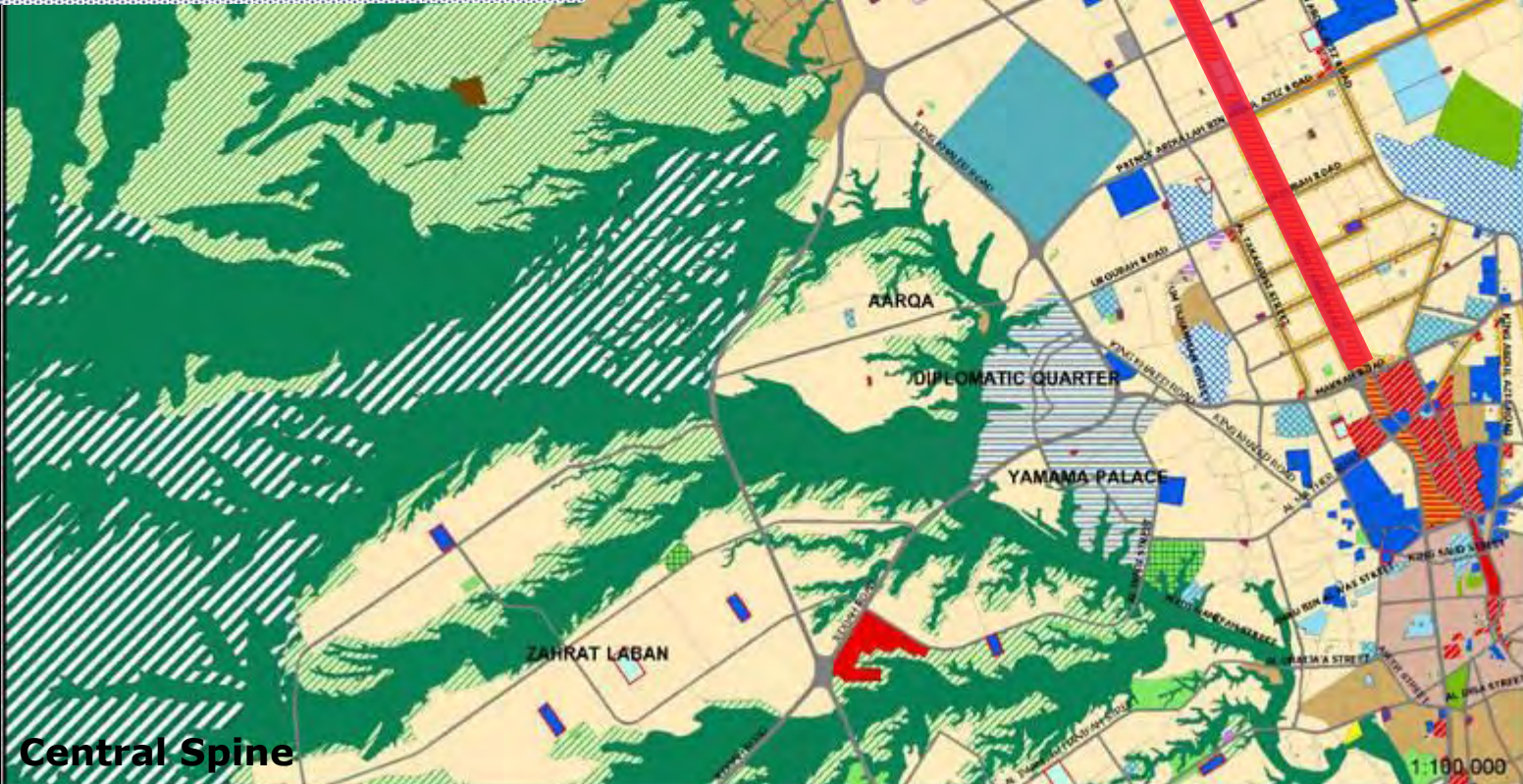
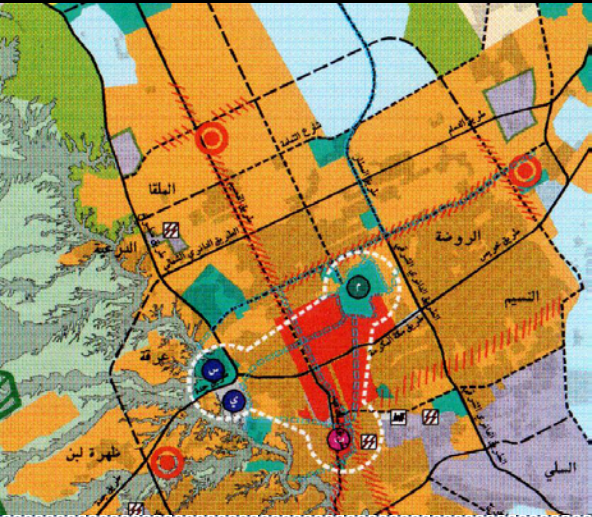
Metropolitan Structure Plan 2021

0 5 10 km

Planning and Building in Riyadh 1975-2005



Planning and Building in Riyadh 1975-2005



LANDUSE PLAN 2021

Legend

Residential

- General Residential
- Traditional Residential
- Kilade Residential
- Enclave

Commercial/Mixed Use

- Metropolitan Sub-Centre
- General Commercial
- Wholesale Services
- Activity Spine
- Car Souk
- Central Spine
- Central Commercial Streets

Public Facility

- Administrative Centre
- Community Centre
- Education/General
- Education/University
- Health
- Cultural/Religious
- Government Offices/Institutions
- Security/Military
- Cemetery

Industrial/Warehousing

- General Manufacturing
- Light Manufacturing
- Hi-Tech Business Park
- Car Services and Repair
- Warehousing
- Buffer Zone
- Mixed Use/Manufacturing
- Mixed Use/Warehousing & Light Manufacturing

Recreation & Open Space

- Metropolitan Open Space
- District Open Space
- Wadi Bed
- Wadi Edge/Linear Parkland
- Sports Complex

Transport and Utilities

- Freeway
- Railwayline
- Transport Terminal
- Public Utility
- Utility Corridor

Resource Production

- Agriculture (Farmland)

Policy Areas

- New City Reserve
- Infrastructure Reserve
- Space Extensive Industry
- Rural Reserve
- Protected Wetland
- Wadi Protected Area

Special Areas

- Old Central Area
- Royal Palaces
- Land Fill

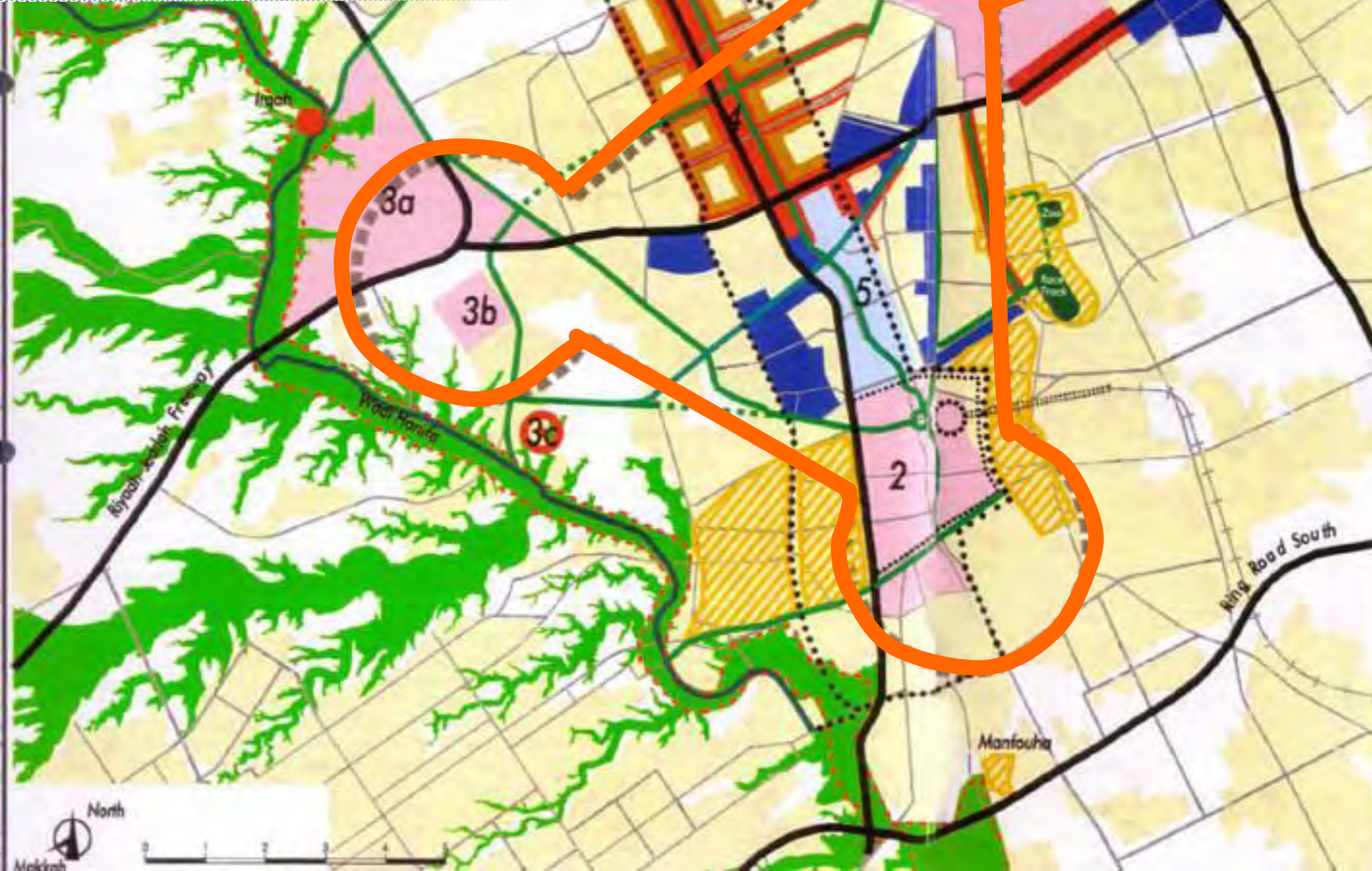
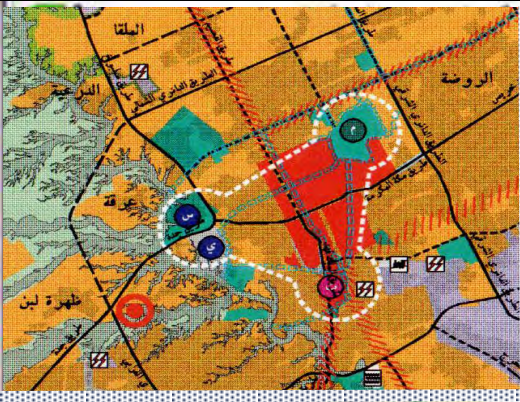
1:100,000

Planning and Building in Riyadh 1975-2005



Central Spine

Planning and Building in Riyadh 1975-2005



Metropolitan Development Strategy for Ar-Riyadh MEDSTAR

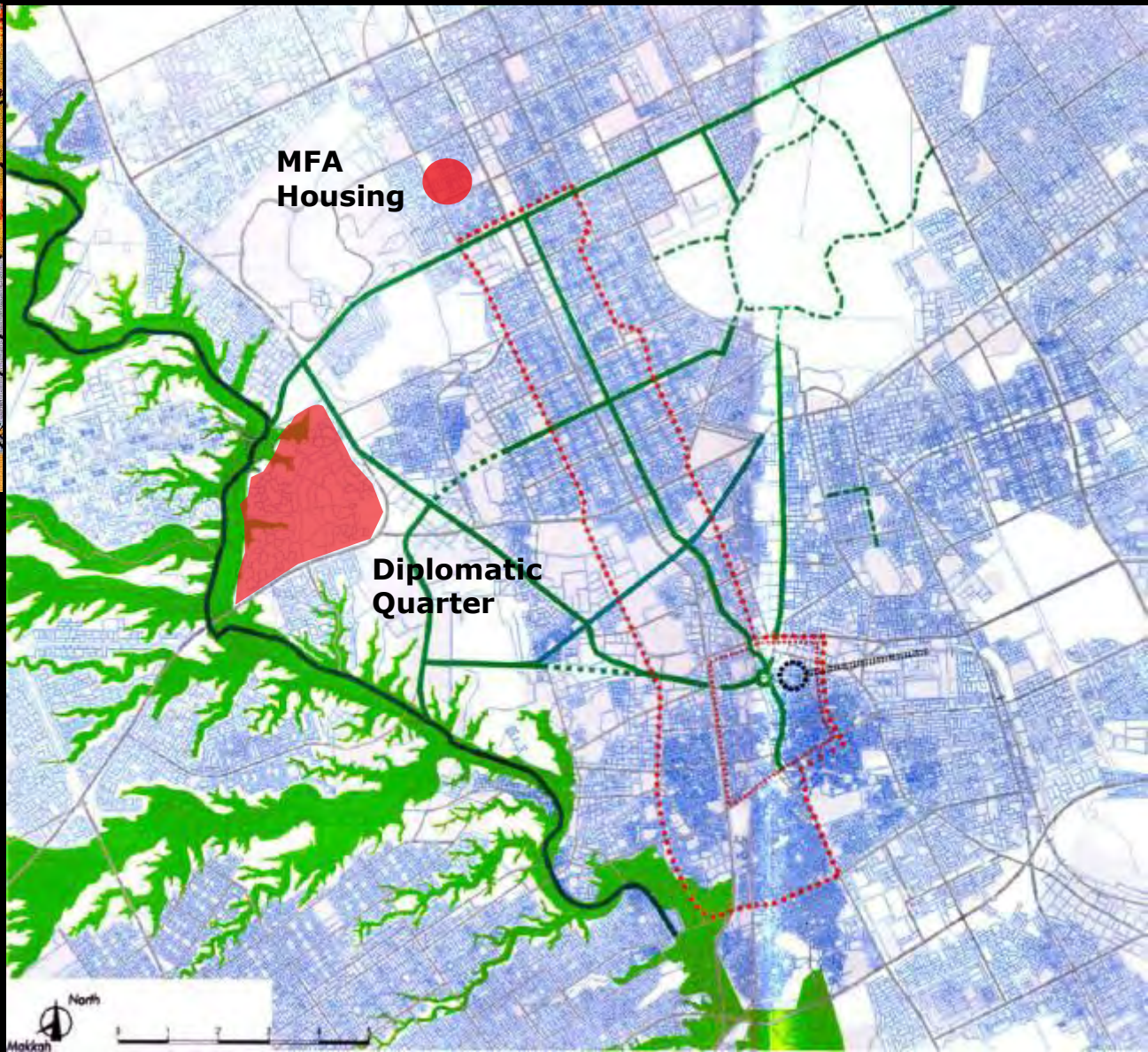
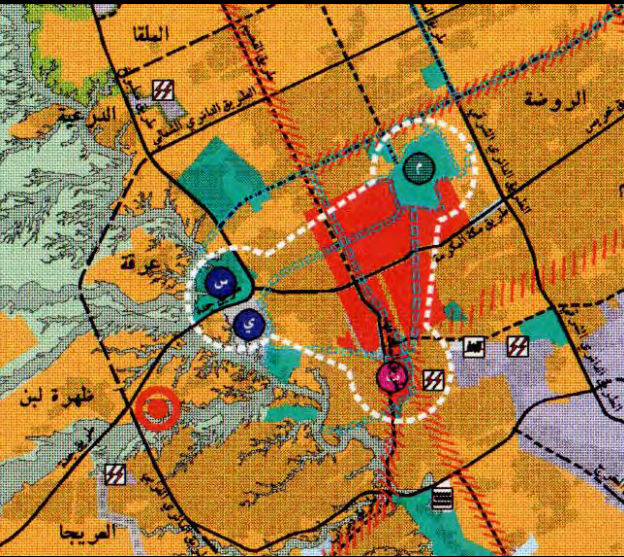
Major Urban Precincts

1. The Central Park
2. The Historic District
- 3a. Diplomatic Quarter
- 3b. Royal Precinct
- 3c. Sports City
4. The Central Spine
5. Transition Spine

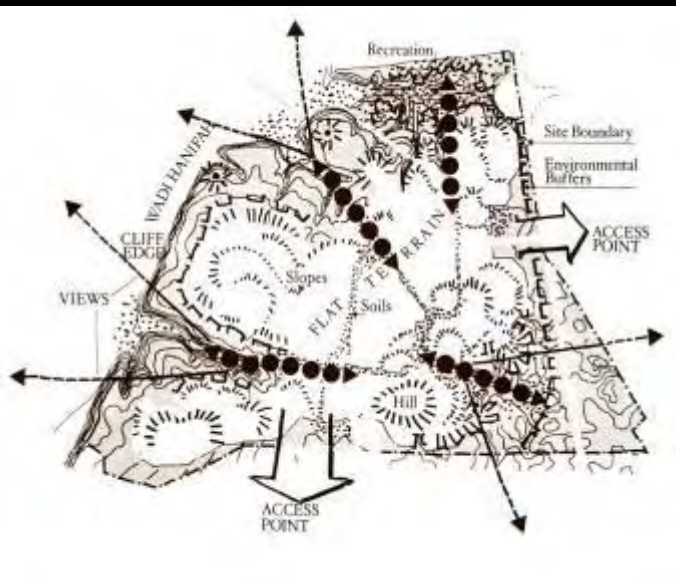
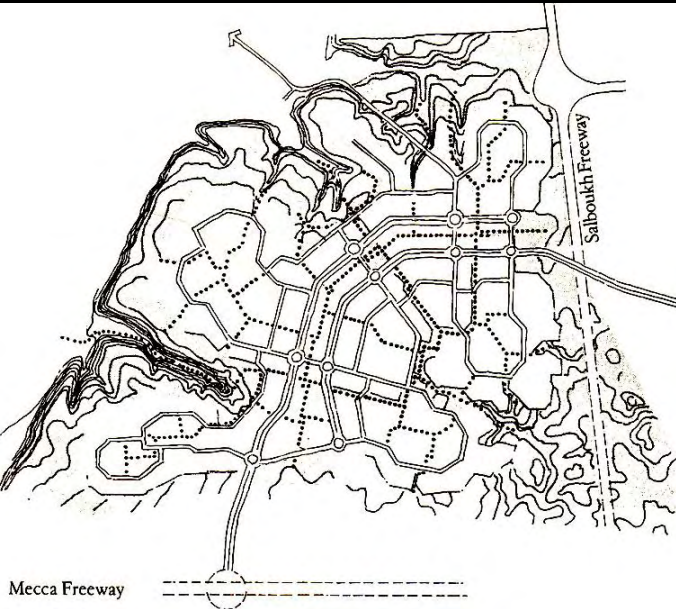
- Ministries & Important Buildings
- Proposed Boulevards Using Existing Roads
- - - Local Boulevards
- Administrative Corridor Boulevard
- Parkway
- ▨ Intensive Commercial Development
- ▨ Restricted Commercial Development
- ▨ Mixed Use Development
- ▨ Predominantly Mid-Rise Residential/Financial
- ⋯ Ring Road A
- ⋯ Ring Road B
- ⋯ Transport Center
- ▨ Extended Railway
- ▨ Residential Precincts for Improvements

CONCEPTUAL LOCAL STRUCTURE PLAN (CMA)

Planning and Building in Riyadh 1975-2005



Planning and Building in Riyadh 1975-2005



Riyadh Diplomatic Quarter

Planning and Building in Riyadh 1975-2005



Riyadh Diplomatic Quarter

Planning and Building in Riyadh 1975-2005



Riyadh Diplomatic Quarter

Planning and Building in Riyadh 1975-2005



Planning and Building in Riyadh 1975-2005



Planning and Building in Riyadh 1975-2005



Planning and Building in Riyadh 1975-2005



Riyadh Diplomatic Quarter

Planning and Building in Riyadh 1975-2005



Riyadh Diplomatic Quarter

Planning and Building in Riyadh 1975-2005



Planning and Building in Riyadh 1975-2005



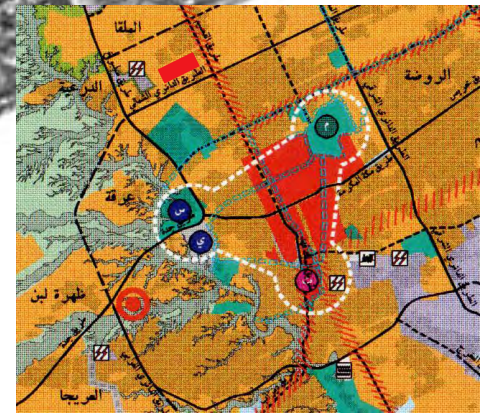
Riyadh Diplomatic Quarter

Planning and Building in Riyadh 1975-2005



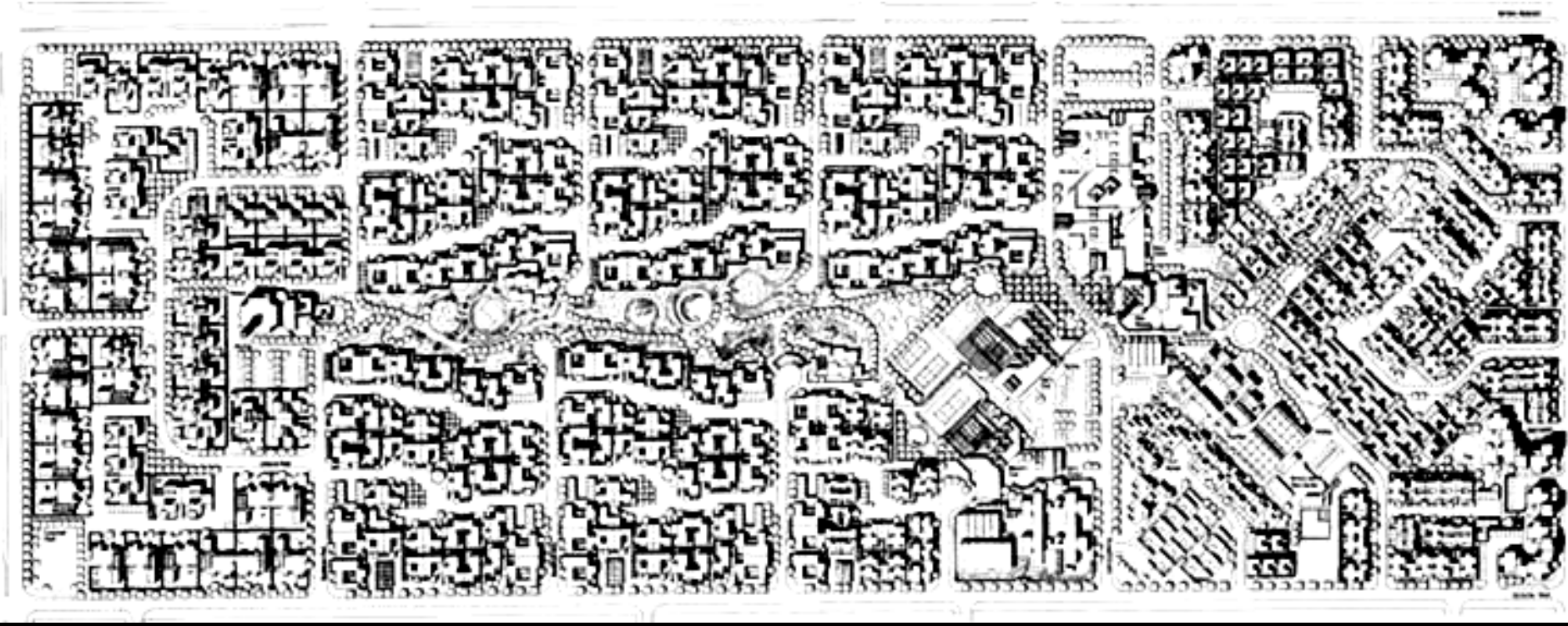
Riyadh Diplomatic Quarter

MFA Housing Quarter



Planning and Building in Riyadh 1975-2005

MINISTRY OF FOREIGN AFFAIRS STAFF HOUSING PROJECT مشروع المجمع السكني لموظفي وزارة الخارجية

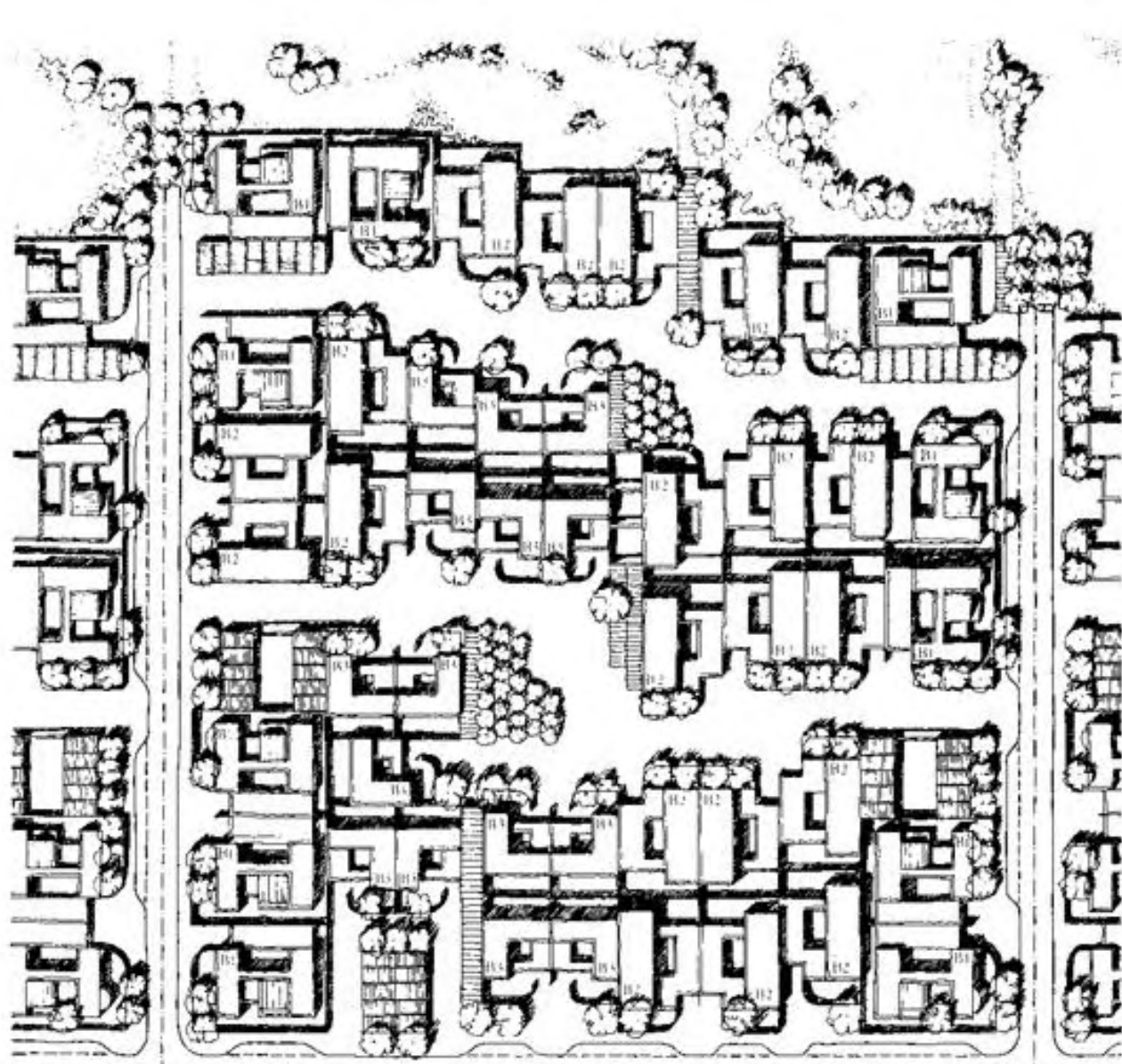


MFA Housing Quarter

Planning and Building in Riyadh 1975-2005



Planning and Building in Riyadh 1975-2005



MFA Housing Quarter

Planning and Building in Riyadh 1975-2005



MFA Housing Quarter

Planning and Building in Riyadh 1975-2005



Planning and Building in Riyadh 1975-2005



Planning and Building in Riyadh 1975-2005



MFA Housing Quarter

Planning and Building in Riyadh 1975-2005

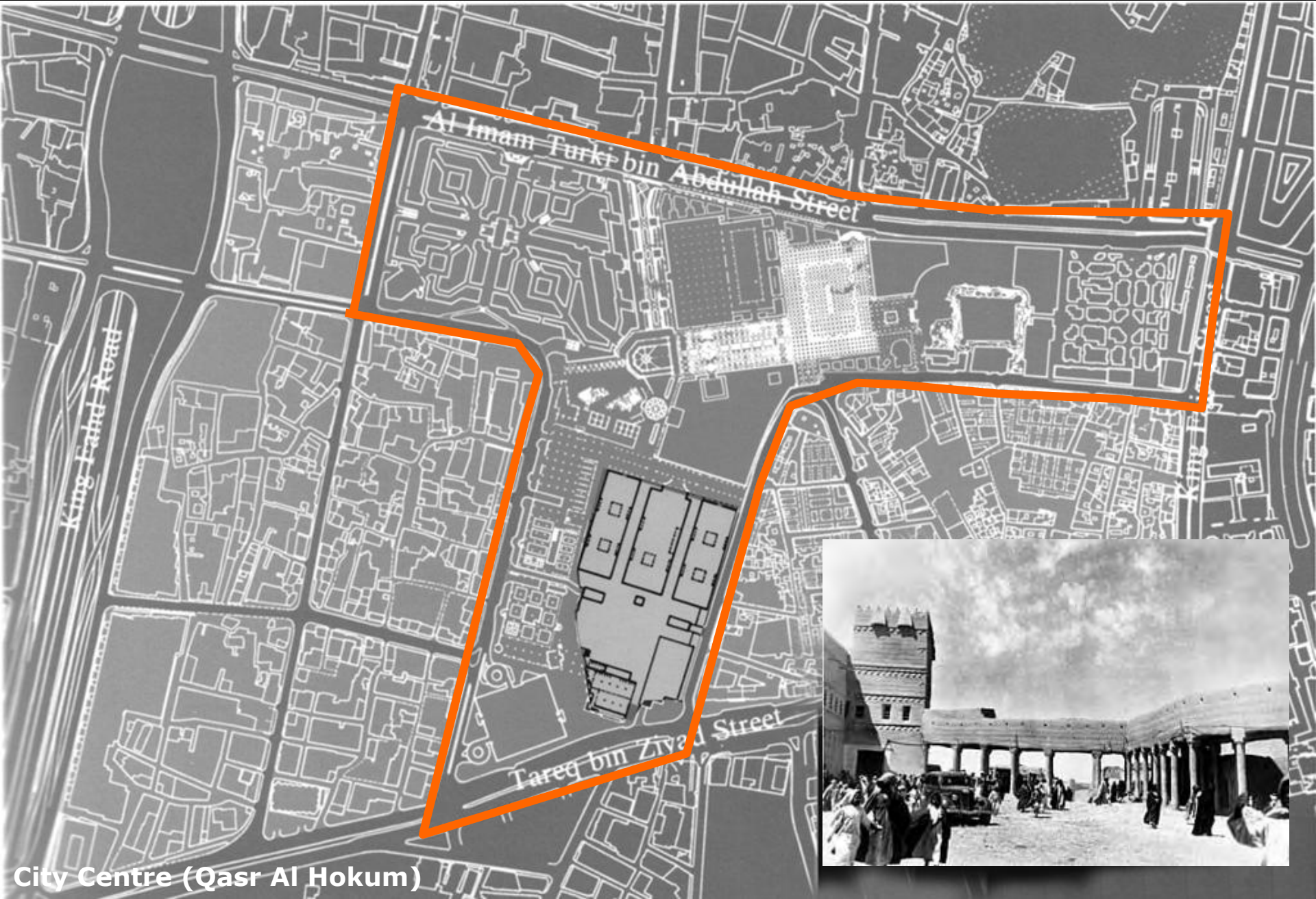


MFA Housing Quarter

Planning and Building in Riyadh 1975-2005



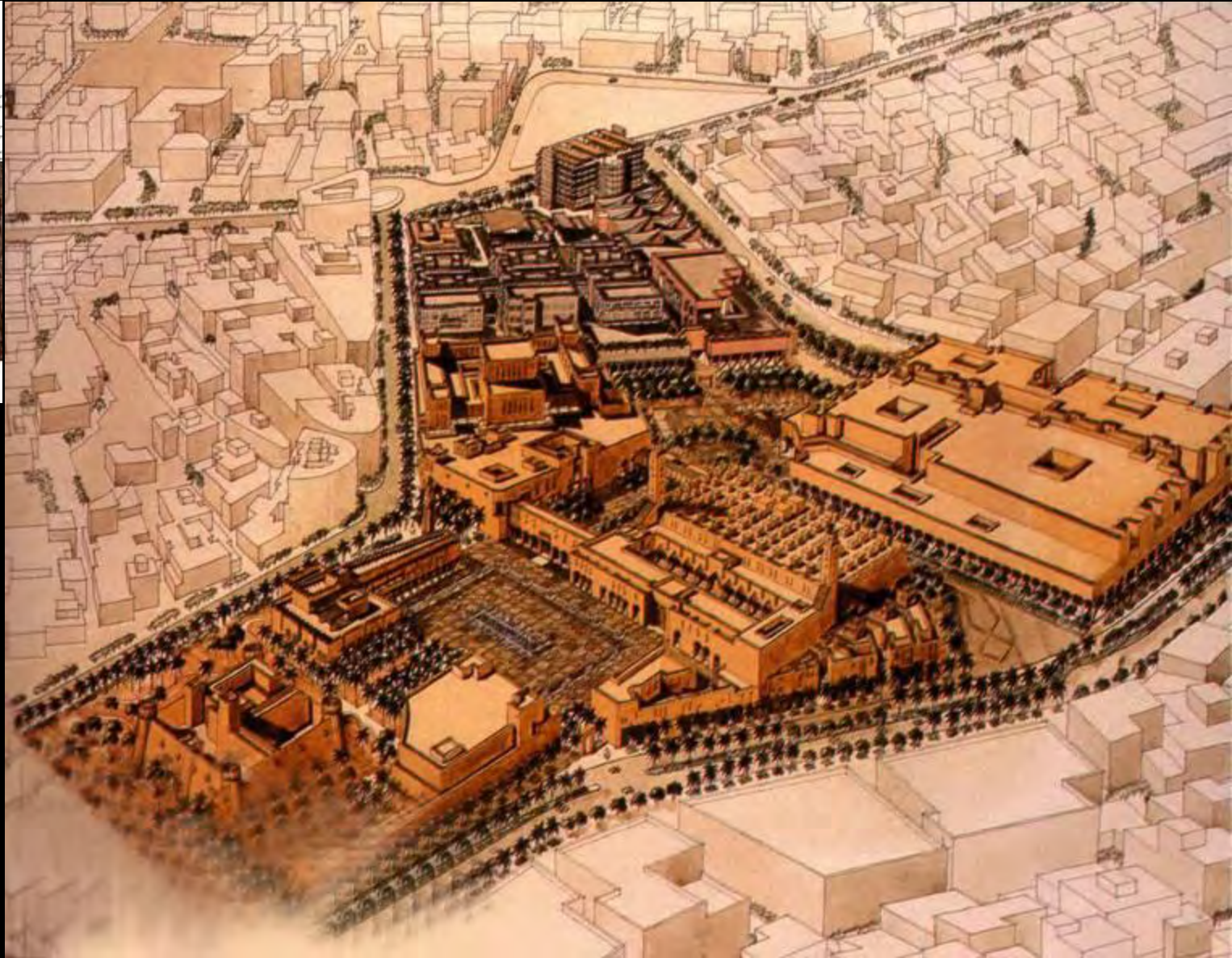
Planning and Building in Riyadh 1975-2005



City Centre (Qasr Al Hokum)

Planning and Building in Riyadh 1975-2005

City Centre (Qasr Al Hokum)



Planning and Building in Riyadh 1975-2005



Planning and Building in Riyadh 1975-2005



Rasem Badran 1982

Planning and Building in Riyadh 1975-2005



Planning and Building in Riyadh 1975-2005



King Abdulaziz Historical Centre

Planning and Building in Riyadh 1975-2005



King Abdulaziz Historical Centre

Planning and Building in Riyadh 1975-2005



Planning and Building in Riyadh 1975-2005



Planning and Building in Riyadh 1975-2005



Planning and Building in Riyadh 1975-2005



Planning and Building in Riyadh 1975-2005



Planning and Building in Riyadh 1975-2005



Planning and Building in Riyadh 1975-2005

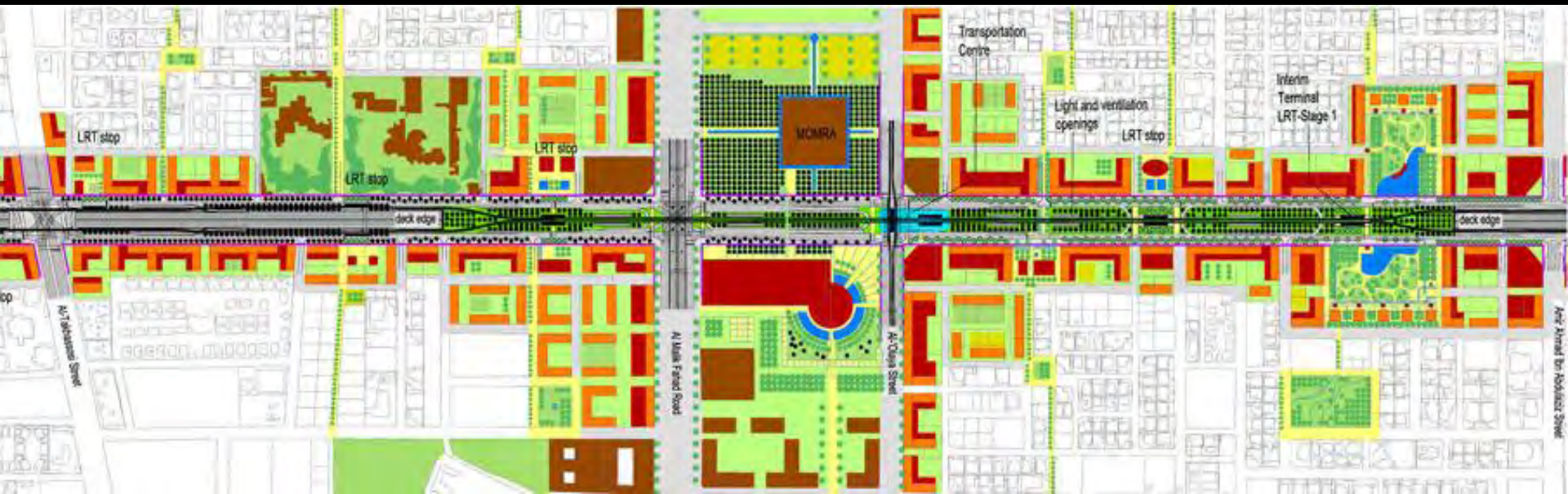
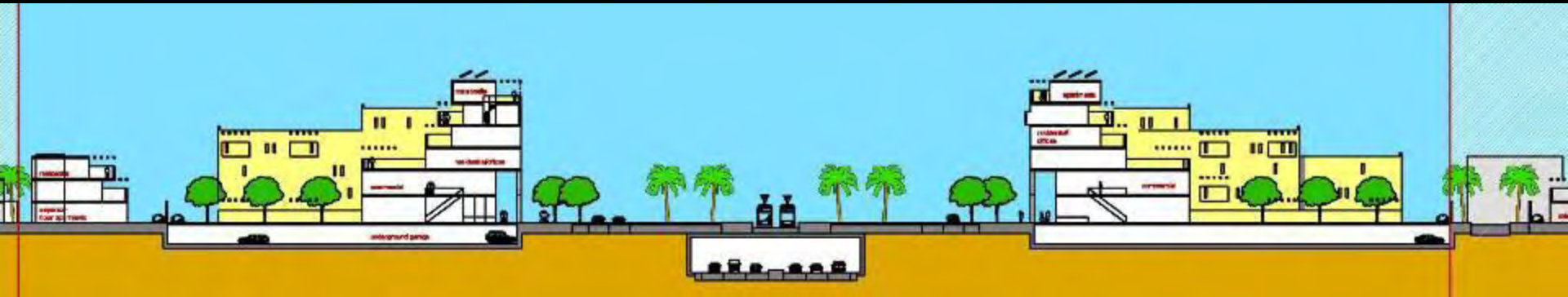


Prince Abdallah Corridor



Planning and Building in Riyadh 1975-2005

Prince Abdallah Corridor



Planning and Building in Riyadh 1975-2005



Prince Abdallah Corridor



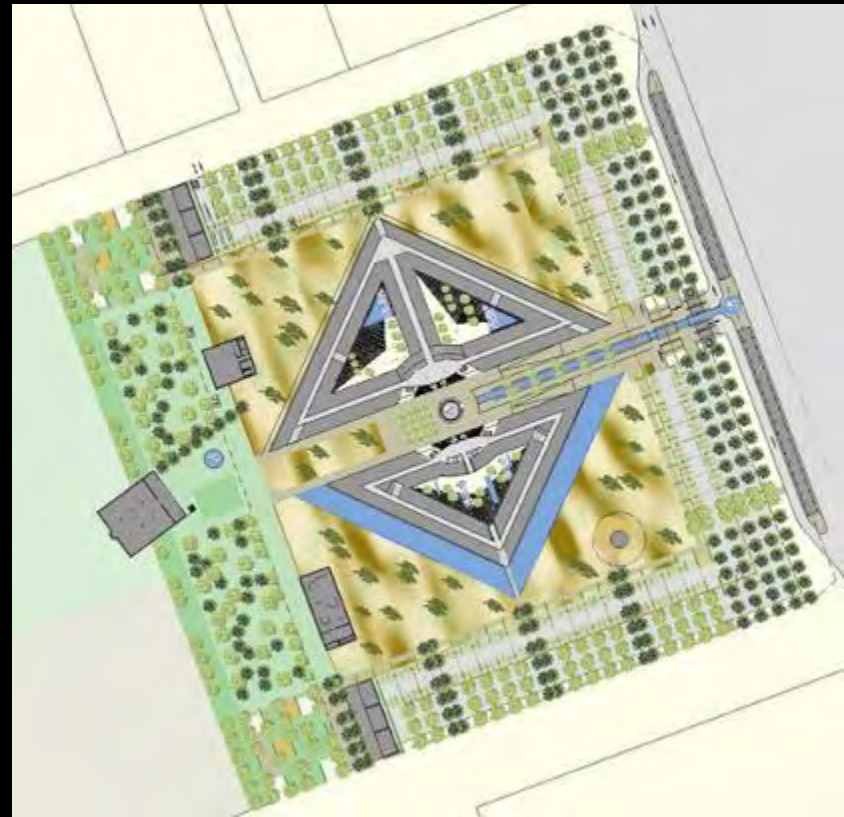
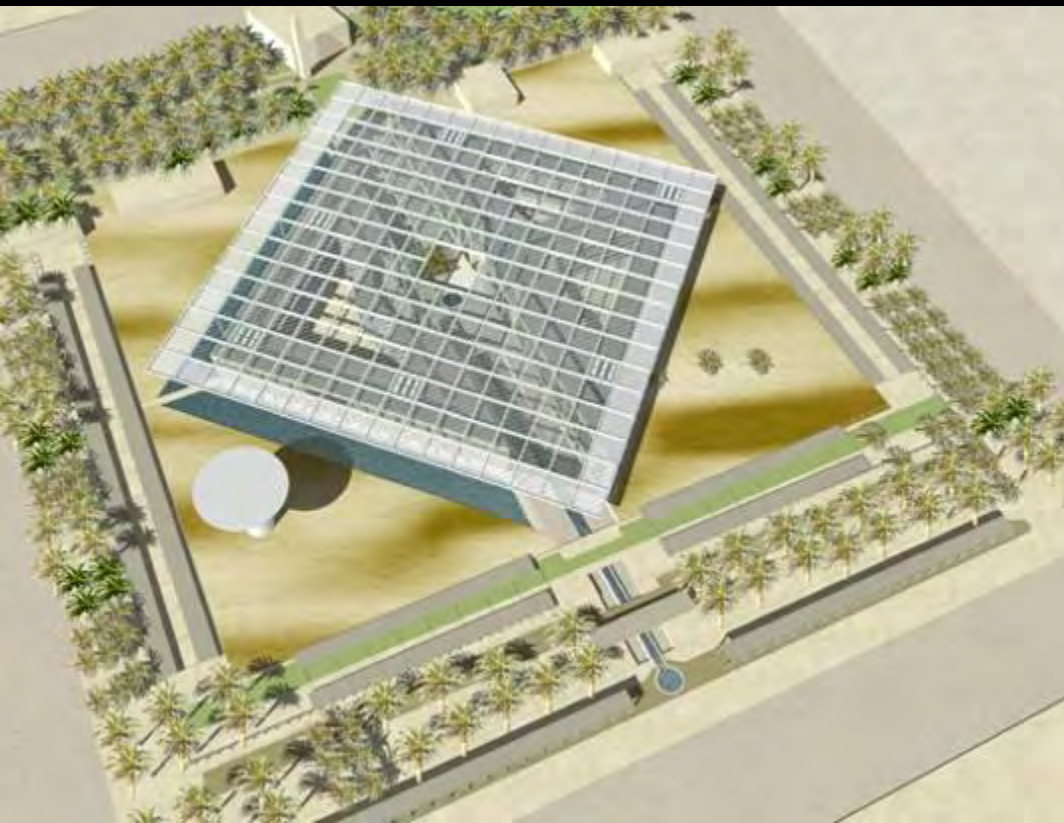
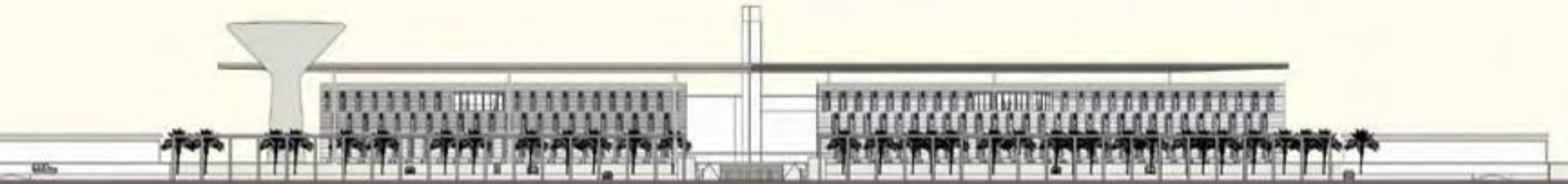
Planning and Building in Riyadh 1975-2005

Prince Abdallah Corridor

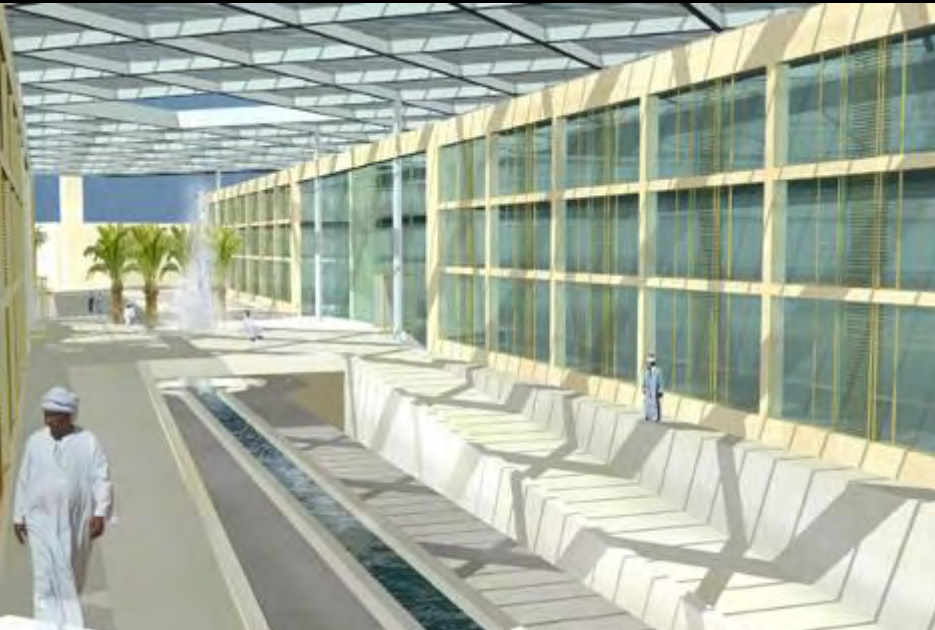


Planning and Building in Riyadh 1975-2005

Ministry of Water & Electricity



Planning and Building in Riyadh 1975-2005



Ministry of Water & Electricity



Planning and Building in Riyadh 1975-2005



Planning and Building in Riyadh 1975-2005



Planning and Building in Riyadh 1975-2005

